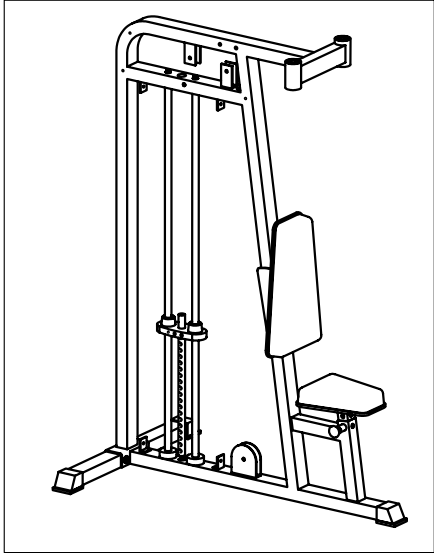


STEP 1

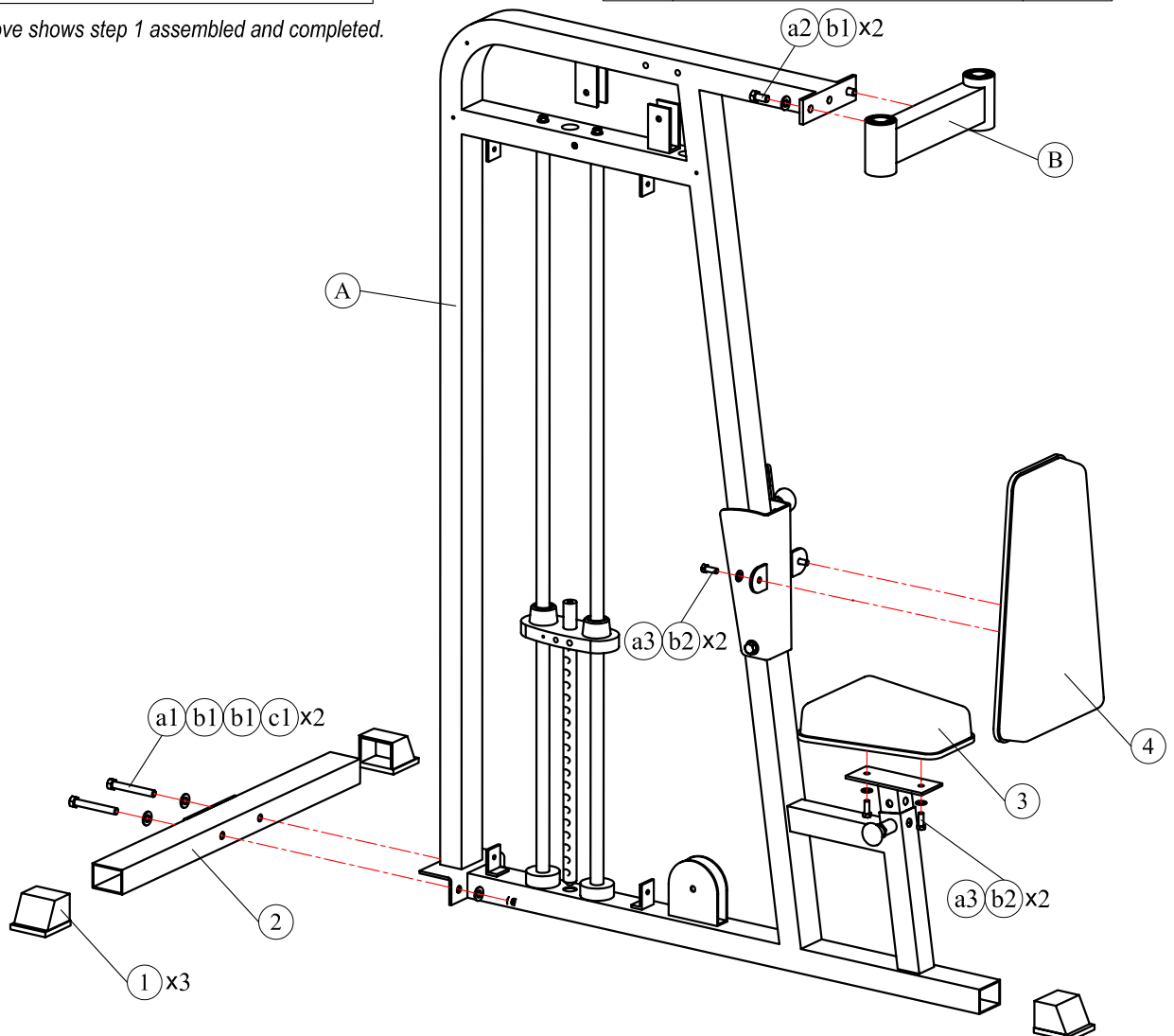
NOTE: During each assembly step, ensure that all bolts and nuts are in place and partially threaded in before completely tightening any one bolt. Two people will be required to perform this procedure.



Above shows step 1 assembled and completed.

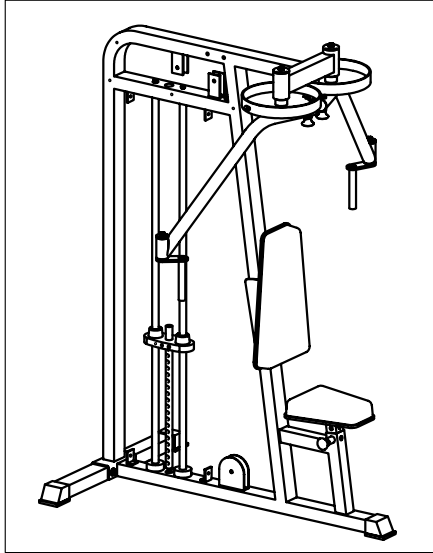
Part list of step 1

ITEM	DESCRIPTION	QTY
A	ASSY,MAIN FRAME	1
B	ASSY, PEC DEC FRAME	1
1	FOOT COVER 2"x2.75"	3
2	BOTTOM TUBE	1
3	SEAT PAD	1
4	BACK PAD	1
a1	BOLT,HHCS,1/2"-13*3 3/4", L=95mm	2
a2	BOLT,HHCS,1/2"-13*1 3/8", L=35mm	2
a3	BOLT,HHCS,3/8"-16*1", L=25mm	4
b1	WASHER,FLAT,1/2"	6
b2	WASHER,FLAT,3/8"	4
c1	LOCK NUT 1/2"-13	2



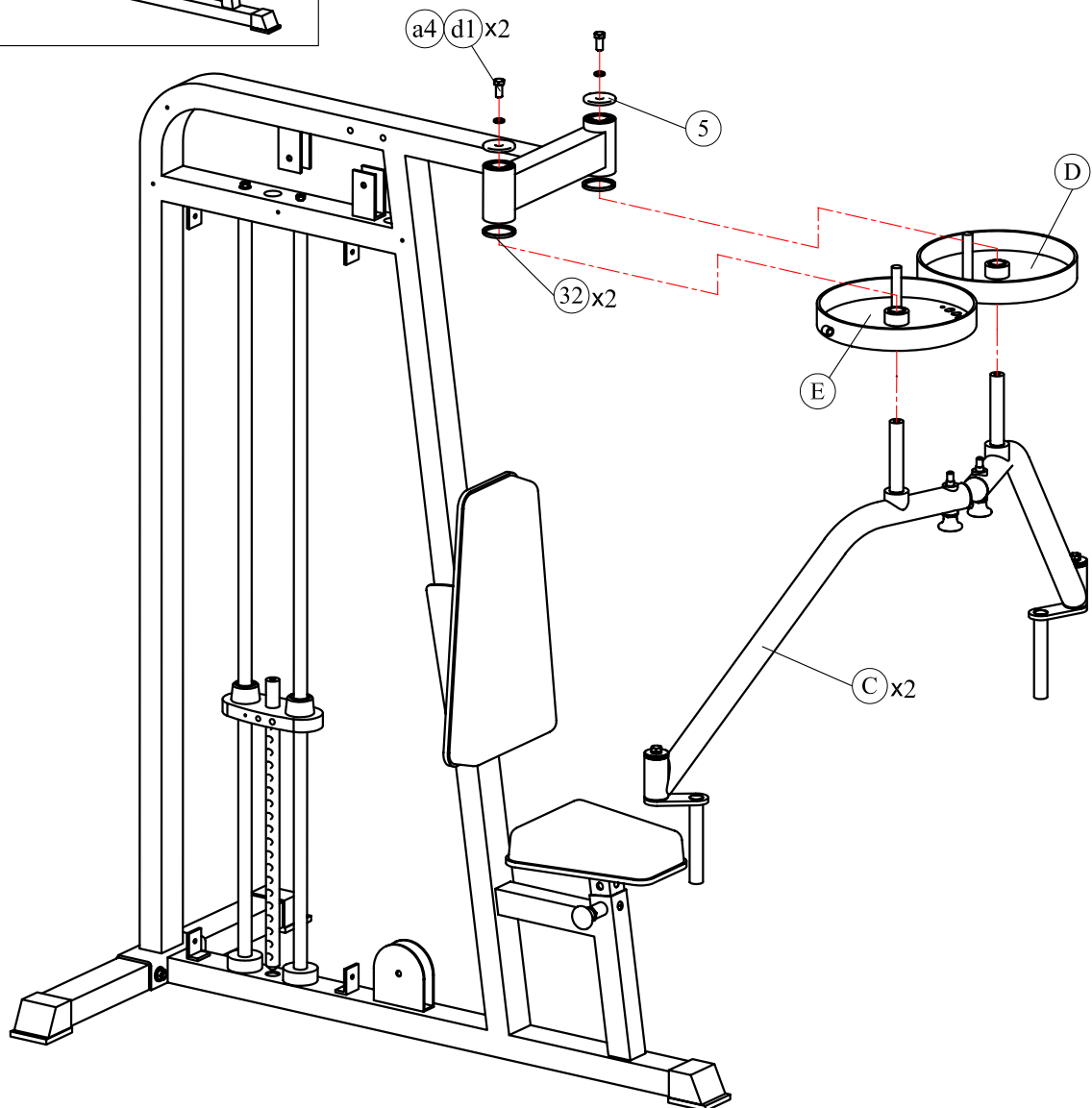
STEP 2

NOTE: During each assembly step, ensure that all bolts and nuts are in place and partially threaded in before completely tightening any one bolt. Two people will be required to perform this procedure.



Part list of step 2


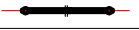
ITEM	DESCRIPTION	QTY
C	ASSY,ARM	2
D	ASSY,RIGHT CAM	1
E	ASSY,LEFT CAM	1
5	CHROME WASHER (Φ60*Φ13*6t)	2
32	WHITE LINING RING (Ø32*Ø25*1.7t)	2
a4	BOLT,HHCS,1/2"-13*1", L=25mm	2
d1	WASHER,LOCK,Ø13	2

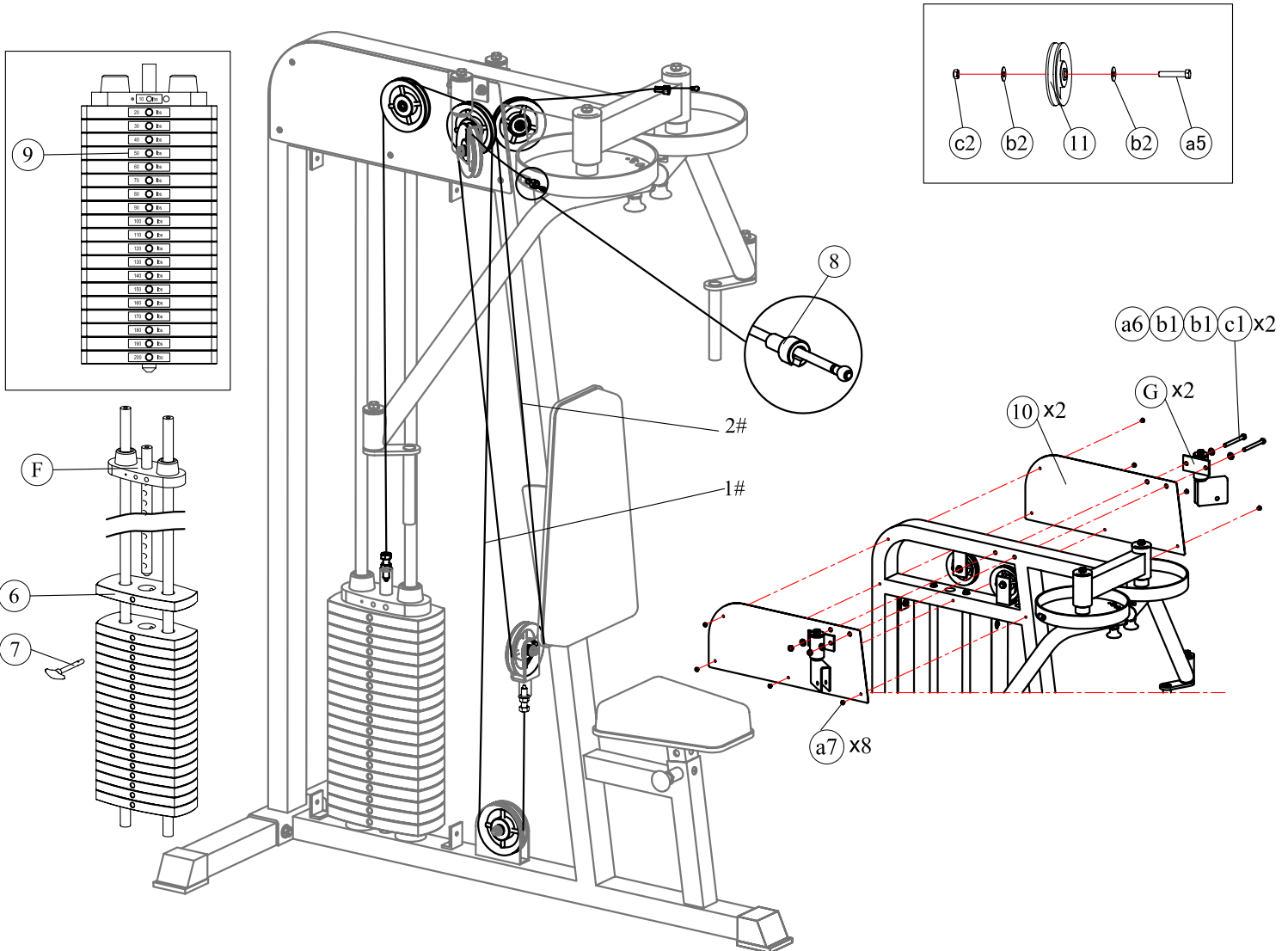


STEP 3

NOTE: During each assembly step, ensure that all bolts and nuts are in place and partially threaded in before completely tightening any one bolt. Two people will be required to perform this procedure.

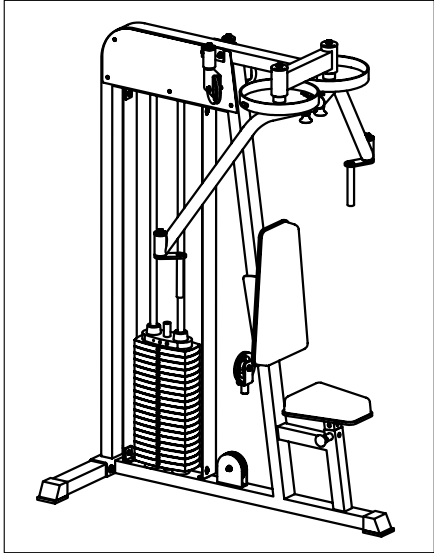
Part list of step 4

ITEM	DESCRIPTION	QTY	ITEM	DESCRIPTION	QTY
F	ASSY, TOP WEIGHT	1	a5	BOLT, HHCS, 3/8"-16*2", L=50mm	6
G	ASSY, TURN PULLEY SUPPORT	2	a6	BOLT, HHCS, 3/8"-16*4", L=100mm	2
6	WEIGHT STACK	19	a7	BOLT, BHCS, 1/4"-20*1/4", L=8mm	8
7	SELECTOR PIN	1	b2	WASHER, FLAT, 3/8"	14
8	CABLE END COLLET, ALUMINIUM	2	c2	LOCK NUT 3/8"-16	8
9	WEIGHT PLATE DECAL (10-200LB)	1	1#		1
10	WEIGHT STACK FRAME SHIELD	2	2#		1
11	NYLON PULLEY ASSEMBLY (4.5")	6			



STEP 4

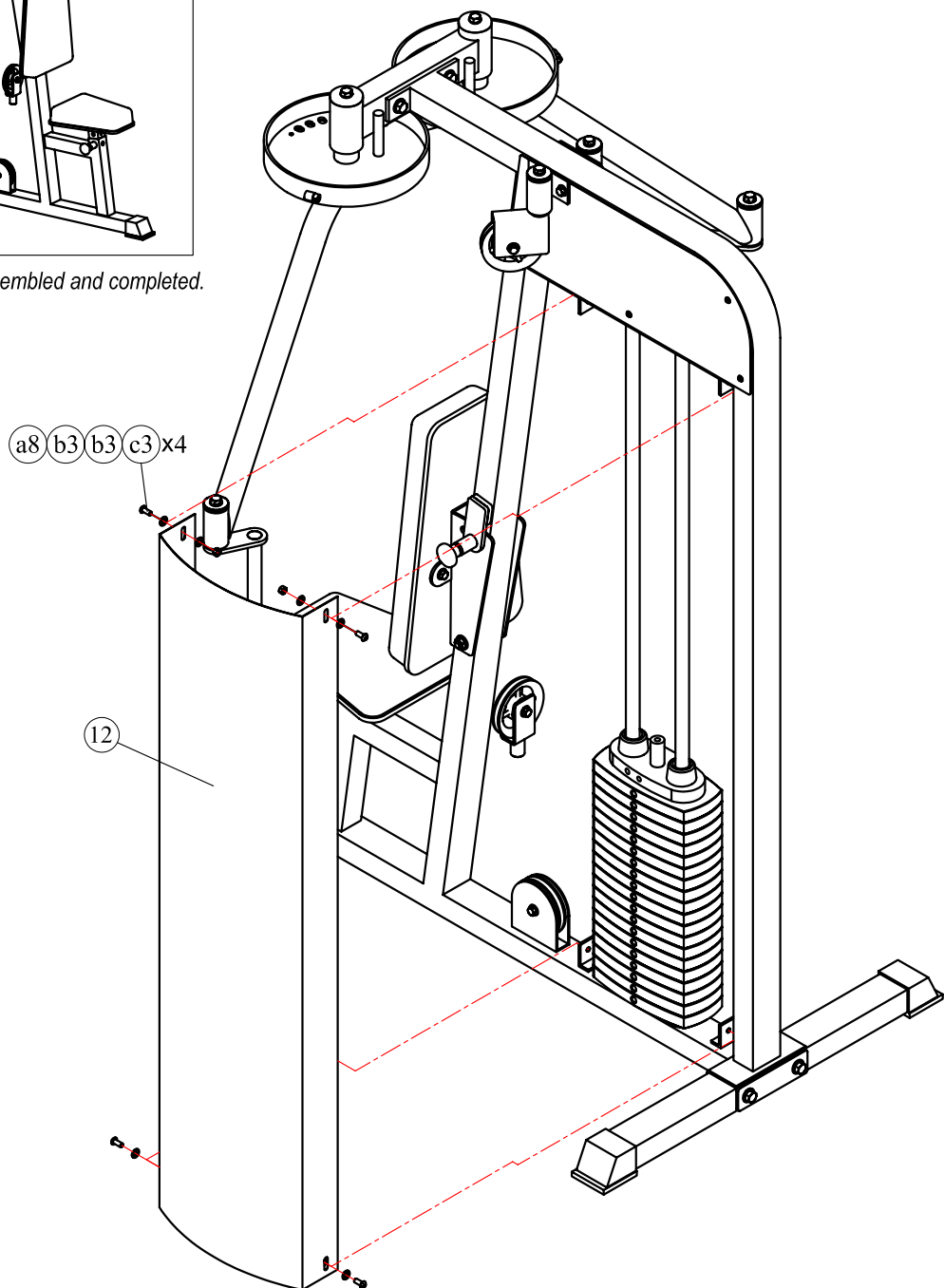
NOTE: During each assembly step, ensure that all bolts and nuts are in place and partially threaded in before completely tightening any one bolt.



Above shows step 5 assembled and completed.

Part list of step 5

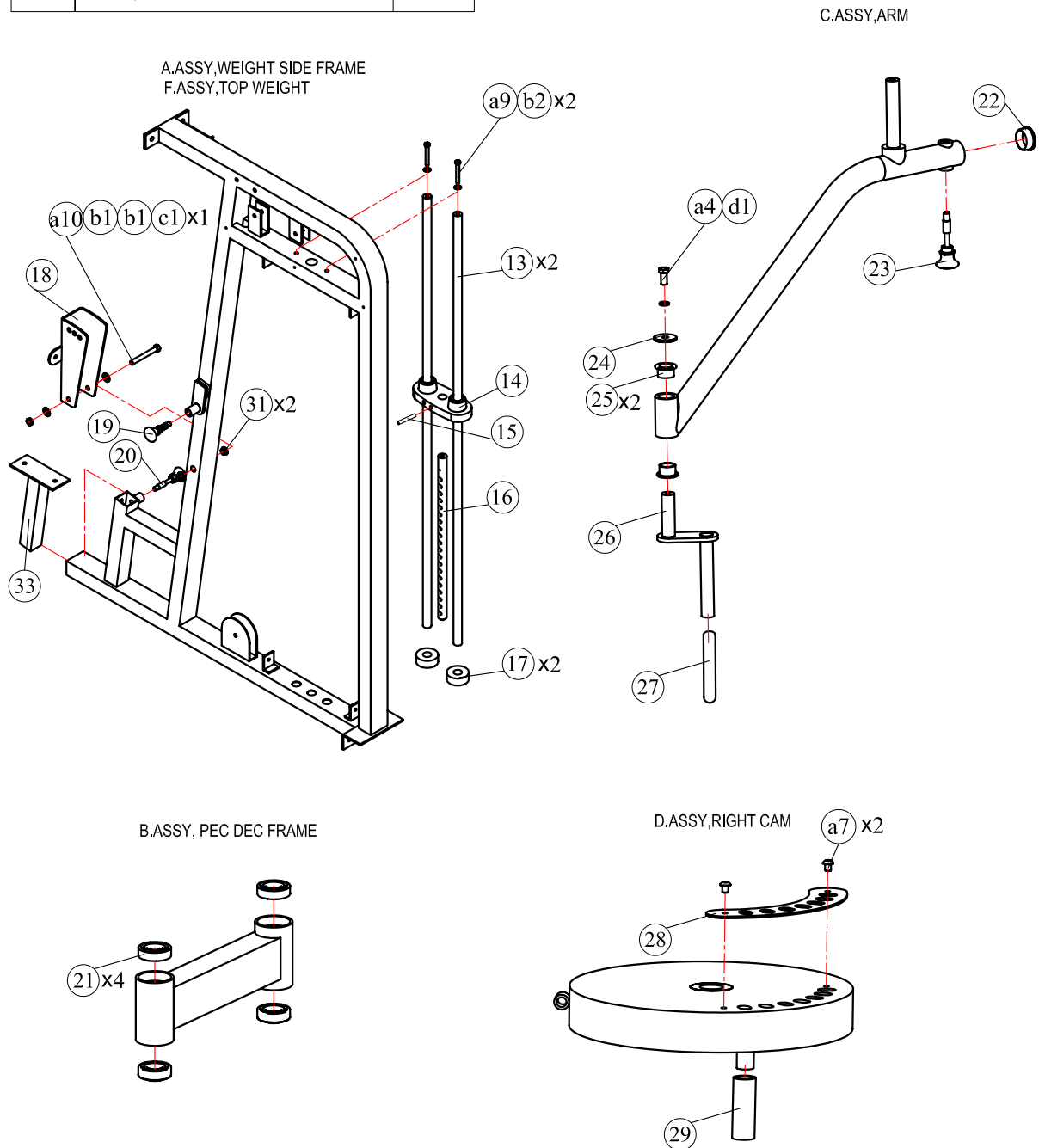
ITEM	DESCRIPTION	QTY
12	WEIGHT STACK SHIELD	1
a8	BOLT,BHCS,5/16"-18*3/4", L=16mm	4
b3	WASHER,FLAT,5/16"	8
c3	NUT, 5/16"-18	4



PRE-ASSEMBLY

PART LIST:

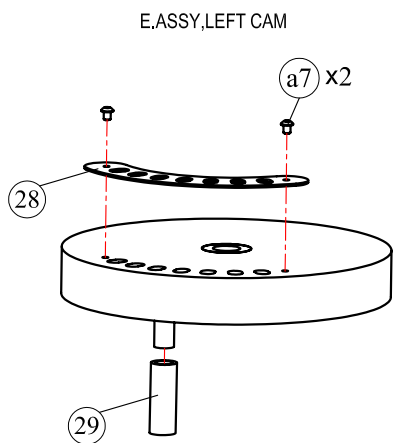
ITEM	DESCRIPTION	QTY
A	ASSY,MAIN FRAME	1
B	ASSY, PEC DEC FRAME	1
C	ASSY,ARM	2
D	ASSY,RIGHT CAM	1
F	ASSY,TOP WEIGHT	1



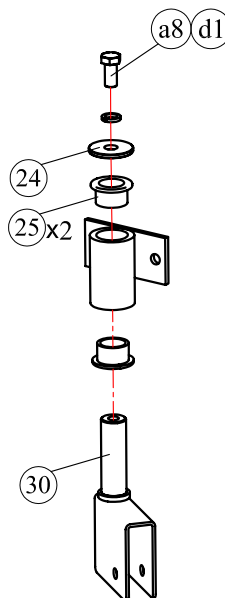
PRE-ASSEMBLY

PART LIST:

ITEM	DESCRIPTION	QTY
E	ASSY,LEFT CAM	1
G	ASSY,TURN PULLEY SUPPORT	2



G.ASSY,TURN PULLEY SUPPORT



PART LIST 1



PART LIST:

ITEM	DESCRIPTION	QTY
1	FOOT COVER 2"x2.75"	3
2	BOTTOM TUBE	1
3	SEAT PAD	1
4	BACK PAD	1
5	CHROME WASHER(Φ60*Φ13*6t)	2
6	WEIGHT STACK	19
7	SELECTOR PIN	1
8	CABLE END COLLET,ALUMINIUM	2
9	WEIGHT PLATE DECAL (10-200LB)	1
10	WEIGHT STACK FRAME SHIELD	2
11	NYLON PULLEY ASSEMBLY(4.5")	6
12	WEIGHT STACK SHIELD	1
13	WEIGHT STACK GUIDE ROD(L=1520)	2
14	TOP WEIGHT	1
15	SPRING PIN(Ø10*70)	1
16	WEIGHT STACK PIN 19 HOLE	1
17	RUBBER DONUT	2
18	ADJUSTABLE BACK PAD PLATE	1
19	PUSH PULL PIN (L=72,LOCKED)	1
20	PUSH PULL PIN (L=77)	1
21	RADIAL BALL BEARING (6205)	4
22	PLASTIC INSERT CAP DIA 2	2
23	PUSH PULL PIN (L=95)	2
24	CHROME WASHER (Φ38*Φ13*5t)	4
25	POWDER METALLURGY BUSHING 1 IDx1 1/4 OD	8
26	HANDLE	2
27	HANDLE (Ø24*165mm)	2
28	SHELTER	2
29	BLOCK	2
29	TURN PULLEY	2
31	POWDER METALLURGY BUSHING 1/2 IDx3/4 OD	2
32	WHITE LINING RING (Ø32*Ø25*1.7t)	2
33	ADJUSTING TUBE	1

HARDWARE LIST:

ITEM	DESCRIPTION	QTY
a1	BOLT,HHCS,1/2"-13*3 3/4", L=95mm	2
a2	BOLT,HHCS,1/2"-13*1 3/8", L=35mm	2
a3	BOLT,HHCS,3/8"-16*1", L=25mm	4
a4	BOLT,HHCS,1/2"-13*1", L=25mm	6
a5	BOLT,HHCS,3/8"-16*2", L=50mm	6
a6	BOLT,HHCS,3/8"-16*4", L=100mm	2
a7	BOLT,BHCS,1/4"-20*1/4", L=8mm	12
a8	BOLT,BHCS,5/16"-18*3/4", L=16mm	4
a9	BOLT,HHCS,3/8"-16*2 3/4", L=70mm	2
a10	BOLT,HHCS,1/2"-13*4", L=100mm	1
b1	WASHER,FLAT,1/2"	8
b1	WASHER,FLAT,3/8"	22
b3	WASHER,FLAT,5/16"	8
c1	LOCK NUT 1/2"-13	3
c2	LOCK NUT 3/8"-16	8
c3	NUT, 5/16"-18	4
d1	WASHER,LOCK,Ø13	6

CABLE LIST:

ITEM	DESCRIPTION	QTY
1#		1
2#		1

Hardware guide:

